

---

Those are the optimal conditions for the show. It can be adapted and negotiated if you ave any problem, but must be agreed by our crew.

---

Lenght of the show : **75 min**

Tour staff : **9 artists, 2 technicians**

**In case of any technical request**

For the stage and lighting : **Gilles ROBERT** : phone **33 1 48 03 22 80 - 33 6 81 43 54 87** - [camaieublafard@wanadoo.fr](mailto:camaieublafard@wanadoo.fr)

For the sound : **Jean-luc MALLET** : phone **33 6 85 53 27 31** - [chell.jean@wanadoo.fr](mailto:chell.jean@wanadoo.fr)

For all the others things : **Michel BERTE/SICALINES** : phone **33 3 22 89 11 22 33 6 22 78 45 54** Fax **33 3.22.89.60.70.**  
[sicalines@wanadoo.fr](mailto:sicalines@wanadoo.fr)

---

## Technical Rider Stage & Light

Aug. 09

### Stage

- Flat black matte surface (or black dance floor)
- Wide : 8 to 12 meters.
- Depth : 7 to 10 meters
- Clearence : 4.50 to 7 meters
- Back drop, black legs and black borders are needed.
- 1 haze machine good quality, type MDG (used during focus & show)

### Theatre staff needed

- 1 light desk operator
- 2 electricians
- 1 FOH desk operator
- 1 sound assistant
- 1 flyman

**We need also 2 stage hands for our scenery.**

**The show must be pre rigged patched and working completely before our arrival.**

We need 8 hours to Focus, install our scenery, record light cue & sound chek.

### Zic zazou technical equipment

We bring :

- 4 Lampshades rigged from Flybar. (100 W each)
- 8 desk lamp on our scenery. (60 W each)
- 1 garland light on forestage. (480 W)
- 3 little cheap smoke machine : Antari Alpha F80 Z
- **We use 2 little indoor pyrotechnic effect (craker & smoke) confined in metal box.**

### Light

Technical equipment chargeable to the organizers

#### ▪ Power and control :

- 1 DMX lighting board with memories, 48 channels minimum and **submasters**.  
(70 cues only on submasters . No time, no crosfade...)
- 60 dimmers 3 kw and wiring
- **11 french 220 volts linking adaptators**

#### ▪ Spotlight :

- **12** Profiles 1kw 16/35° (RJ 614)
  - **1** Profiles 1kw 11/26° (RJ 611)
  - **2** Profiles 2 kw 15/40° (RJ 714)
  - **2** Profiles 2 kw 29/50° (RJ 713)
  - **13** PC 1 kW (or 2kw on FOH for big house)
  - **7** PC 2 kW
  - **4** PAR CP 60 (VNSP)
  - **28** PAR CP 62 (MFL)
  - **4** Flood lights
  - **1** Stroboscop DMX
-

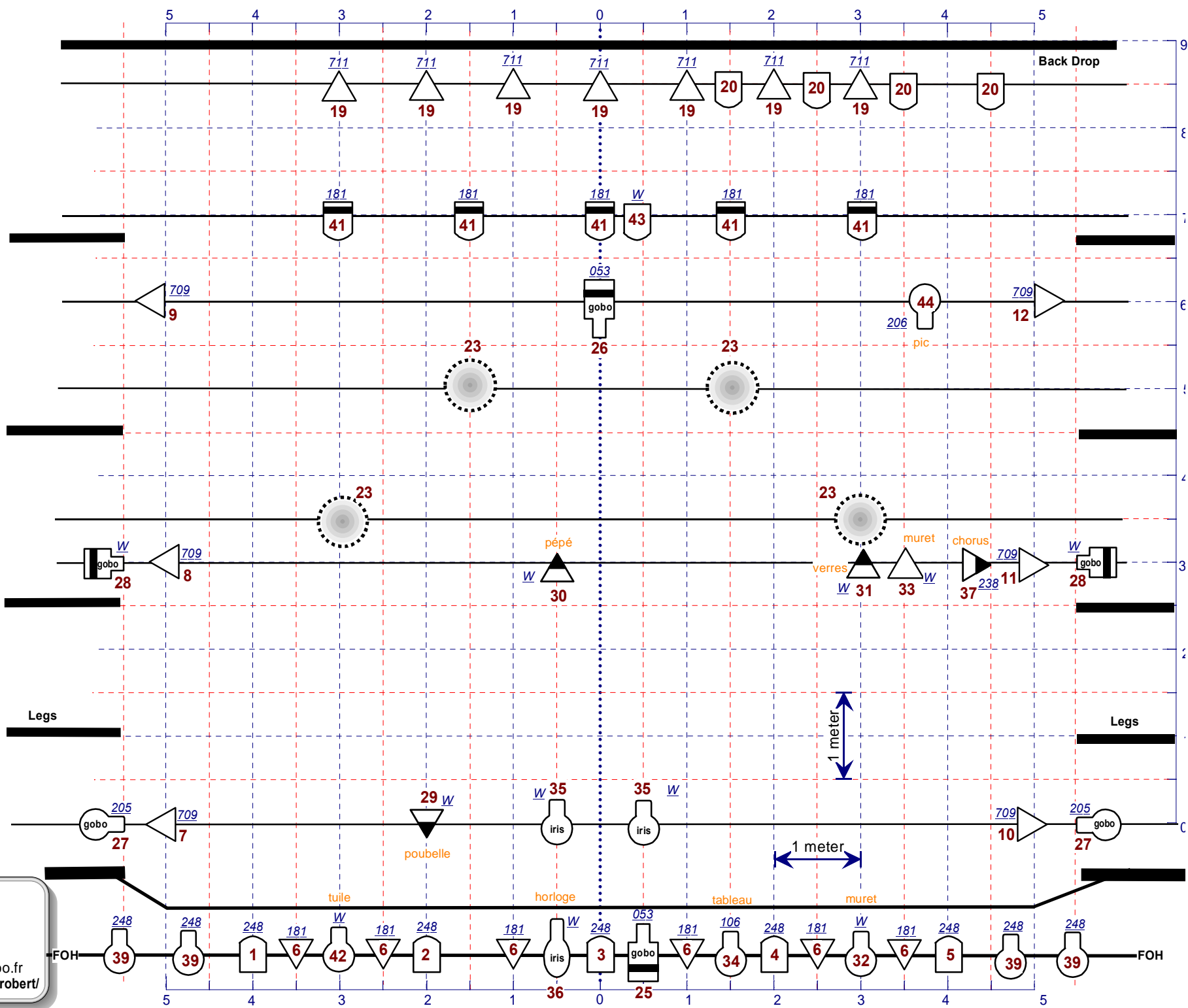
Please sent us a set of the specification of your place

▪ **Accessories :**

- 2 Iris for profils for 1 kW RJ 614
- 1 Iris for profils for 1 kW RJ 611
- 2 Gobo holder for 1 kW RJ 614
- 2 Gobo holder for profile 2 kw RJ 714
- 2 Gobo holder for profile 2 kw RJ 713
- 6 Light stand 2.5 meters
- 1 Light stand 1.5 meters
- 5 Barn door for PC (FOH)
- 10 Floor stand

| N°  | Focus                | Spotlight                                     | Gel Lee Filters | Accessories                | rig                        |
|-----|----------------------|---|-----------------|----------------------------|----------------------------|
| 1.  | Face 248             | 1 PC 1 kw                                     | Lee 248         | Barn door                  | FOH                        |
| 2.  | Face 248             | 1 PC 1 kw                                     | Lee 248         | Barn door                  | FOH                        |
| 3.  | Face 248             | 1 PC 1 kw                                     | Lee 248         | Barn door                  | FOH                        |
| 4.  | Face 248             | 1 PC 1 kw                                     | Lee 248         | Barn door                  | FOH                        |
| 5.  | Face 248             | 1 PC 1 kw                                     | Lee 248         | Barn door                  | FOH                        |
| 6.  | Face 181             | 6 PAR CP62 or PC 2 kW for big house           | Lee HT 181      |                            | FOH                        |
| 7.  | LAT face jardin 709  | 1 PAR CP 62                                   | Lee 709         |                            | Flybar                     |
| 8.  | LAT mit jardin 709   | 1 PAR CP 62                                   | Lee 709         |                            | Flybar                     |
| 9.  | LAT loint jardin 709 | 1 PAR CP 62                                   | Lee 709         |                            | Flybar                     |
| 10. | LAT face cour 709    | 1 PAR CP 62                                   | Lee 709         |                            | Flybar                     |
| 11. | LAT mit cour 709     | 1 PAR CP 62                                   | Lee 709         |                            | Flybar                     |
| 12. | LAT loint cour 709   | 1 PAR CP 62                                   | Lee 709         |                            | Flybar                     |
| 13. | LAT face jardin 201  | 1 PAR CP 62                                   | Lee 201         | Stand 2.50 m.              | Stand 2.50 m.              |
| 14. | LAT mit jardin 201   | 1 PAR CP 62                                   | Lee 201         | Stand 2.50 m.              | Stand 2.50 m.              |
| 15. | LAT loint jardin 201 | 1 PAR CP 62                                   | Lee 201         | Stand 2.50 m.              | Stand 2.50 m.              |
| 16. | LAT face cour 137    | 1 PAR CP 62                                   | Lee 137         | Stand 2.50 m.              | Stand 2.50 m.              |
| 17. | LAT mit cour 137     | 1 PAR CP 62                                   | Lee 137         | Stand 2.50 m.              | Stand 2.50 m.              |
| 18. | LAT loint cour 137   | 1 PAR CP 62                                   | Lee 137         | Stand 2.50 m.              | Stand 2.50 m.              |
| 19. | CONTRE 711           | 7 PAR CP 62                                   | Lee 711         |                            | Flybar                     |
| 20. | CONTRE W ↙           | 4 PC 1 kW                                     | ∅               |                            | Flybar                     |
| 21. | Sol 205              | 3 PC 1 kW                                     | Lee 205         | 3 Floor stand              | Floor                      |
| 22. | 8 Lampes archi       | 8 desk lamp Zic zazou on scenery (60 W each)  |                 |                            | Floor                      |
| 23. | 4 LAMPES             | 4 Lampshades Zic zazou (100 W each)           |                 |                            | Flybar                     |
| 24. | PORTE                | 2 PAR CP 62                                   | Lee 201         | Stand 1.50m. + Floor stand | Stand 1.50m. + Floor stand |
| 25. | GOBO ↑               | 1 Profile 2 kW RJ 714                         | Lee 053         | 1 Gobo Holder              | Flybar                     |
| 26. | GOBO ↓               | 1 Profile 2 kW RJ 714                         | Lee 053         | 1 Gobo Holder              | Flybar                     |
| 27. | GOBO ↘ ↙ 205         | 2 Profiles 1 kW RJ 614                        | Lee 205         | 2 Gobo Holder              | Flybar                     |
| 28. | GOBO → ←             | 2 Profiles 2 kW RJ 713                        | ∅               | 2 Gobo Holder              | Flybar                     |
| 29. | poubelle             | 1 PAR CP 60                                   | ∅               |                            | Flybar                     |
| 30. | pépé                 | 1 PAR CP 60                                   | ∅               |                            | Flybar                     |
| 31. | verres               | 1 PAR CP 60                                   | ∅               |                            | Flybar                     |
| 32. | face muret           | 2 Profiles 1 kW RJ 614                        | ∅               | Framing shutter            | FOH                        |
| 33. | muret                | 1 PAR CP 62                                   | ∅               |                            | Flybar                     |
| 34. | TABLEAU              | 1 Profile 614 SX                              | Lee 106         | Framing shutter            | FOH                        |
| 35. | CLOUS                | 2 Profiles 614 SX                             | ∅               | 2 Iris                     | Flybar                     |
| 36. | horloge              | 1 Profile 1 kW 611                            | ∅               | 1 Iris + Framing shutter   | FOH                        |
| 37. | chorus               | 1 PAR CP 60                                   | Lee 238         |                            | Flybar                     |
| 38. | HUBLOS               | Zic zazou garland light on forestage. (480 W) |                 |                            | Floor                      |
| 39. | proscénium           | 4 Profiles 1 kW RJ 614                        | Lee 248         | Framing shutter            | FOH                        |
| 40. | 3ème type WWW        | 2 PC 2 kW                                     | ∅               | 2 Floor stand              | Floor                      |
| 41. | CONTRE CONQUES       | 5 PC 2 kW                                     | Lee HT 181      |                            | Flybar                     |
| 42. | ardoises             | 1 Profile 1 kW RJ 614                         | ∅               | Framing shutter            | FOH                        |
| 43. | tuile                | 1 PC 1 kW                                     | ∅               |                            | Flybar                     |
| 44. | Pic Nic              | 1 Profile 1 kW RJ 614                         | Lee 206         |                            | Flybar                     |
| 45. | mur                  | 4 Flood lights 1 kW                           | ∅               | 4 Floor stand              | Floor                      |
| 46. | stroboscope          | 1 stroboscop DMX                              |                 |                            | Floor                      |

- 13** P.C. 1 kw
- 7** P.C. 2 kw
- 12** Profile 1 kw 16/35° RJ 614
- 1** Profile 1 kw 11/26° RJ 611
- 2** Profile 2 kw 16/35° RJ 714
- 2** Profile 2 kw 15/40° RJ 713
- 28** PAR CP 62 (MFL)
- 4** PAR CP 60 (VNSP)
- 4** Flood light 1 kW
- 1** Stroboscop
- Lampshades Zic zizou
- Desk lamp Zic zizou
- "garland Zic Zizou
- 230v. Non dim circuit french adaptator
- Stand 2.50 m.
- stand 1.50 m.
- Floor
- 202** GEL Lee Filters
- 48** circuit

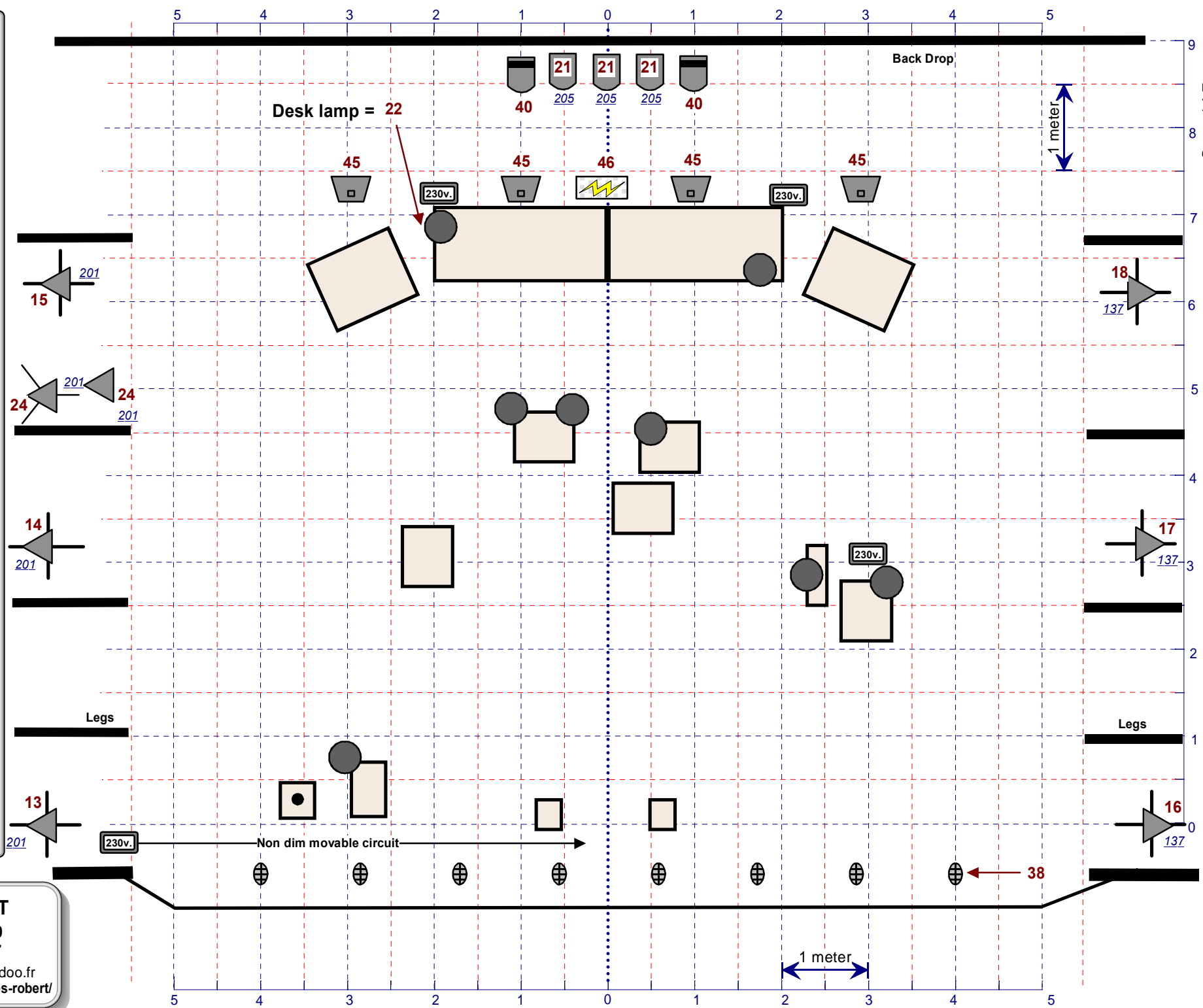


**Gilles ROBERT**  
 33 1 48 03 22 80  
 33 6 81 43 54 87  
 camaieublafard@wanadoo.fr  
<http://perso.wanadoo.fr/gilles-robot/>

# ZIC ZAZOU

Brocante Sonore  
**THE MECHANICIANS**  
 Floor  
 Aug 09

- 13 P.C. 1 kw
- 7 P.C. 2 kw
- 12 Profile 1 kw  
16/35° RJ 614
- 1 Profile 1 kw  
11/26° RJ 611
- 2 Profile 2 kw  
16/35° RJ 714
- 2 Profile 2 kw  
15/40° RJ 713
- 28 PAR CP 62 (MFL)
- 4 PAR CP 60 (VNSP)
- 4 Flood light 1 kw
- 1 Stroboscop
- Lampshades  
Zic zizou
- Desk lamp  
Zic zizou
- "garland  
Zic Zizou
- 230v.  
Non dim circuit  
french adaptator
- Stand 2.50 m.
- stand 1.50 m.
- Floor
- 202 GEL Lee Filters
- 48 circuit



**Gilles ROBERT**  
 33 1 48 03 22 80  
 33 6 81 43 54 87  
 camaieublafard@wanadoo.fr  
<http://perso.wanadoo.fr/gilles-robot/>

La Brocante Sonore  
**THE MECHANICIANS**  
**Technical Rider Sound**

Aug. 09

---

□ **PA**

- The PA should be positioned so that the area in front of the stage is well exposed to the sound (use nearfills if necessary).
- The power required should be measured to the capacity of the venue and should be able to handle at least 105 dB SPL, noiseless and distortion free. Preference D&B L.acoustic ....

□ **FOH**

- Mixing desk : 32 mic input 4 stéréo line input 4 band parametric eq. - 8 aux with switch pre/post per channel- 8 subgroups (preference midas XL Yamaha PM )
- 1 double graphic eq 2x31 bands insert on the left right output (preference klark teknik, BSS)
- 3 double limiter compressors insert on subgroup 1-2-3-4 and channel 13-14 ( preference BSS)
- 1 CD player
- ZicZaZou provided the M5000 tc electronic and the PCM60 lexicon
- Professional digital desk are accepted too ( preference yamaha PM5D RH or M7CL )

**Please Note:** The frontdesk should be positioned in the center and allow immediate view of the stage. Please avoid placing the frontdesk against the back wall of the venue or underneath a balcony.

□ **MONITOR**

Monitoring will preferably be done from front desk

- 4 ways monitor
- 4 sides with stand ( min 2m ) preference D&B max15 L.acoustic 115
- 2 wedges preference D&B max15 L.acoustic 115 ( min 15" boomer )
- 4 graphics eq 31 bands preference Klark Teknik BSS

Aux 1 Sides Left – Aux 2 Sides Right - Aux 3 wedges – Aux 4 We provided a HP ( Bouyer Horn 15 ohms , with 10m cable and speakon NL4 ) but we need your amplification

□ **STAGE**

- ZicZaZou provided all the radio mic and the 01V96 yamaha
- We need 1 sub patch 12 input 15m and 1 sub patch 8 input 15m
- **We need windscreen on all the statics ( channel 7/8/9/10/11/12)**

□ **MIC , Di and STAND LIST**

- 3 AKG 535 –
- 6 Statics **with windscreen** (Km184 Neuman/451 AKG...) –
- 2 e604 Sennheiser
- 5 Sm91 Shure –
- 1 sm58 Shure –
- 1 tallback –
- 8 DI BSS
- 5 long stands with telescopic boom
- 2 small stands with telescopic boom
- 4 Stands for the side fill

□ **WIRELESS SYSTEM**

Zic Zazou bring their own rack with 6 wireless systems of the “Sennheiser evolution series“ and Rexer Type.

This rack should be placed as close as possible to the stagebox (channel. 15/16/17/18/19/20/21/22)

The frequencies are (in MHz):

- **740.000** MHz
- **800.100** MHz
- **806.375** MHz
- **774.000** MHz
- **809.500** MHz
- **806.375** MHz

Please switch off all other wireless equipment during Zic Zazou soundcheck and show.


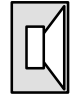

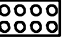



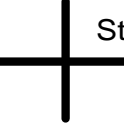

La Brocante Sonore  
**THE MECHANICIANS**  
**Technical Rider Sound**

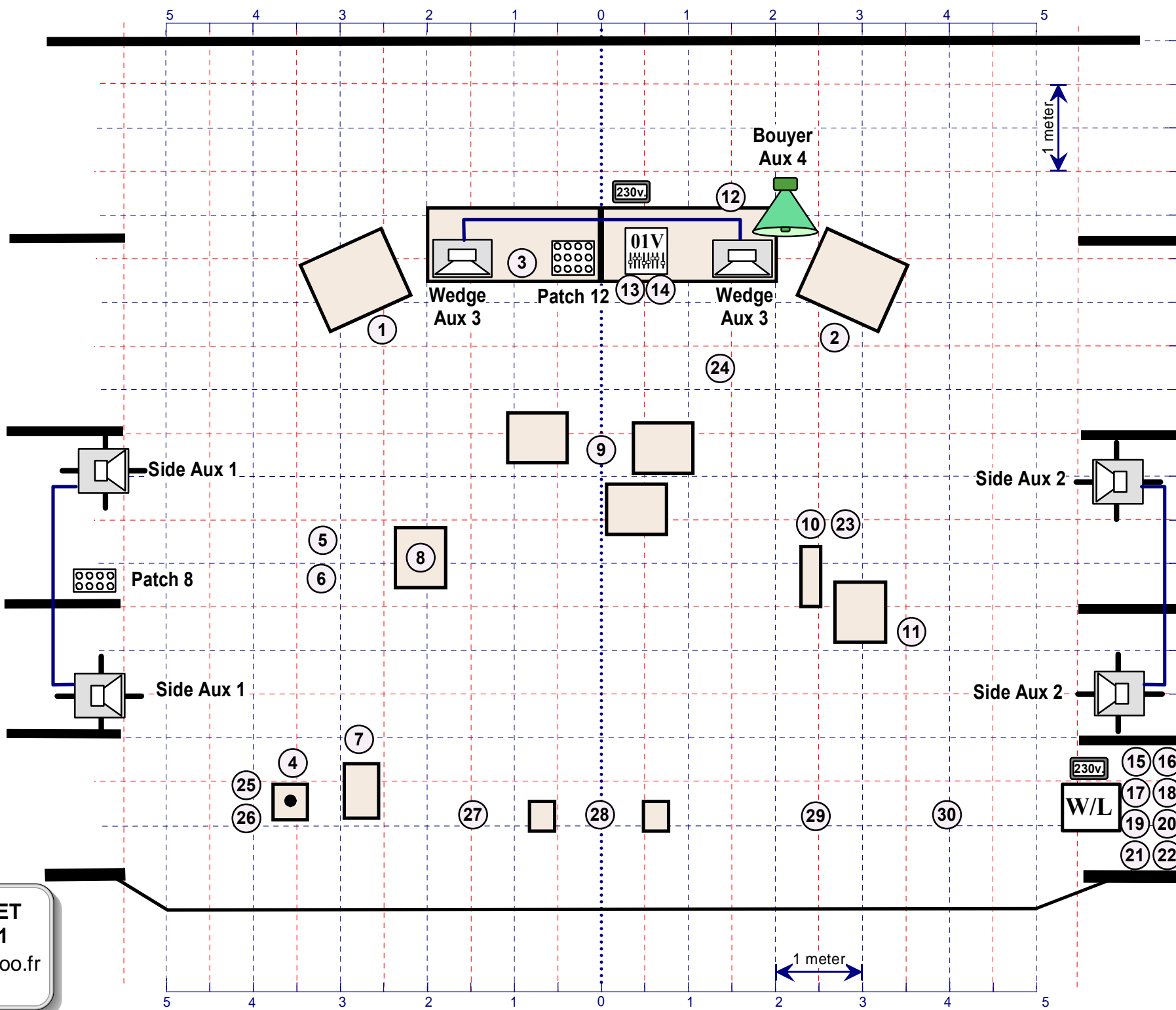
Aug. 09

| Channel              | Instruments                | mic                              | insert | stand    |
|----------------------|----------------------------|----------------------------------|--------|----------|
| 1                    | Tuyau jard                 | AKG 535                          |        | small    |
| 2                    | Tuyau cour                 | AKG 535                          |        | small    |
| 3                    | Bâton de pluie             | AKG 535                          |        | provided |
| 4                    | tom                        | E604 Sennheiser                  |        |          |
| 5                    | Tuyau bruno                | E604 Sennheiser                  |        |          |
| 6                    | cajon                      | Shure Sm91                       |        |          |
| 7                    | Poste 1                    | Statics + wind screen (km184...) |        | long     |
| 8                    | Poste 2                    | Statics + wind screen (km184...) |        | long     |
| 9                    | Poste 3                    | Statics + wind screen (km184...) |        | long     |
| 10                   | Poste 4                    | Statics + wind screen (km184...) |        | long     |
| 11                   | Poste 5                    | Statics + wind screen (km184...) |        | long     |
| 12                   | Poste 6                    | Statics + wind screen (km184...) |        | provided |
| 13                   | Stage mix 01V yamaha Left  | XLR                              | Comp   |          |
| 14                   | Stage mix 01V Yamaha Right | XLR                              | Comp   |          |
| 15                   | Accordeon (wireless)       | XLR                              |        |          |
| 16                   | Trompet 1 (wireless)       | XLR                              |        |          |
| 17                   | Trombon (wireless)         | XLR                              |        |          |
| 18                   | Trompet 2 (wireless)       | XLR                              |        |          |
| 19                   | Clar bass (wireless)       | XLR                              |        |          |
| 20                   | Sax alto (wireless)        | XLR                              |        |          |
| 21                   | Piano                      | XLR                              |        |          |
| 22                   | Melodica                   | XLR                              |        |          |
| 23                   | Sampler                    | Di act BSS                       |        |          |
| 24                   | Voc                        | Shure Sm58                       |        | long     |
| 25                   | Table verres               | XLR                              |        |          |
| 26                   | Table verres               | XLR                              |        |          |
| 27                   | Amb scène                  | Shure Sm91                       |        |          |
| 28                   | Amb scène                  | Shure Sm91                       |        |          |
| 29                   | Amb scène                  | Shure Sm91                       |        |          |
| 30                   | Amb scène                  | Shure Sm91                       |        |          |
| Stereo<br>Line Input | M5000 Left<br>Right        |                                  |        |          |
| Stereo<br>Line Input | Pcm60 Left<br>Right        |                                  |        |          |
| Stereo<br>Line Input | CD player Left<br>Right    |                                  |        |          |

**Patch 01V96 yamaha on stage**

| Channel | Instruments    | mic        | insert | stand |
|---------|----------------|------------|--------|-------|
| 1       | Bass michel    | Di act BSS |        |       |
| 2       | Bass jouet     | Di act BSS |        |       |
| 3       | Bass pierre    | Di act BSS |        |       |
| 4       | Gtr - yukulele | Di act BSS |        |       |
| 5       | Sanza          | Di act BSS |        |       |
| 6       | Boite à clous  | Di act BSS |        |       |
| 7       | voilier        | Di act BSS |        |       |

-  Side X 4
-  Wedge X 2
-  Circuit
-  Patch 8 X 1
-  Patch 12 X 1
-  01V96
-  230v
-  Stand 2.00 m.  
X 4
-  Bouyer  
provide  
by Zic Zazou



**Jean Luc MALLET**  
 33 685 53 27 31  
 chell.jean@wanadoo.fr